



GIG  
CYMRU  
NHS  
WALES

Bwrdd Iechyd Prifysgol  
Hywel Dda  
University Health Board

# Cutting out the middleman in Arrhythmia detection

Ffion Lloyd-Thomas

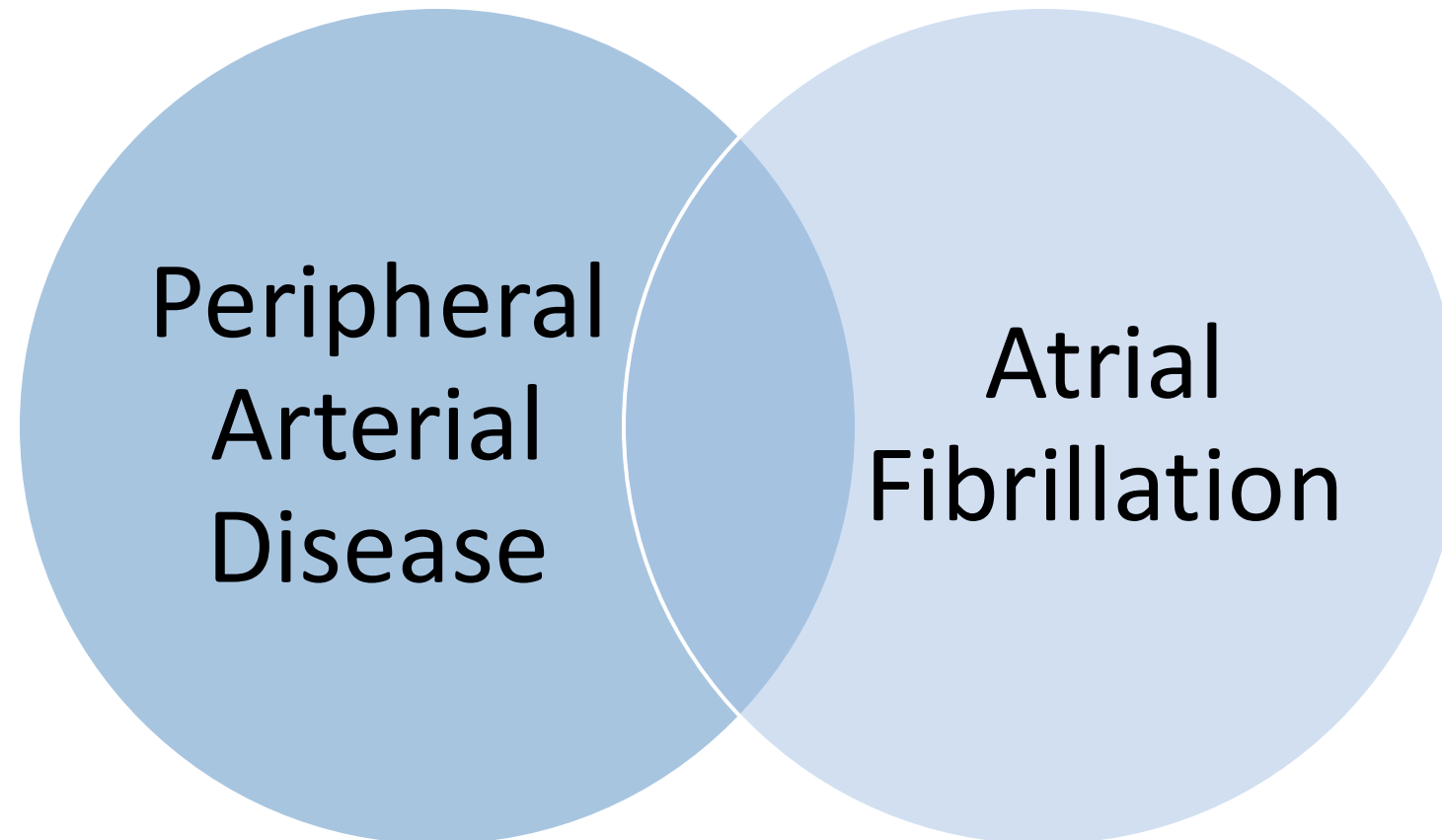




- Cardiology department received £216,000 in 2022/23 and £187,000 in 2023/24 from Welsh Value in Health Team, Welsh Government for Atrial Fibrillation..
- ‘Screen more, diagnose earlier and manage better’.
- Prevalence of AF in Hywel Dda is as high as 4%, above the Welsh Average of 3.5%.
- Hywel Dda has an average rate of Stroke and TIA of 9.6%, which is 0.65% higher than the Wales average and is the second highest in Wales.
- Approached Podiatry to help spend money November 2023.
- Discussed using Kardia AliveCor – NICE approved.



- A) Regularly check pulses and can hear irregularities (opportunistic).
- B) High risk patients within the NHS. CHA<sub>2</sub>DS<sub>2</sub>-VASc as a consequence.

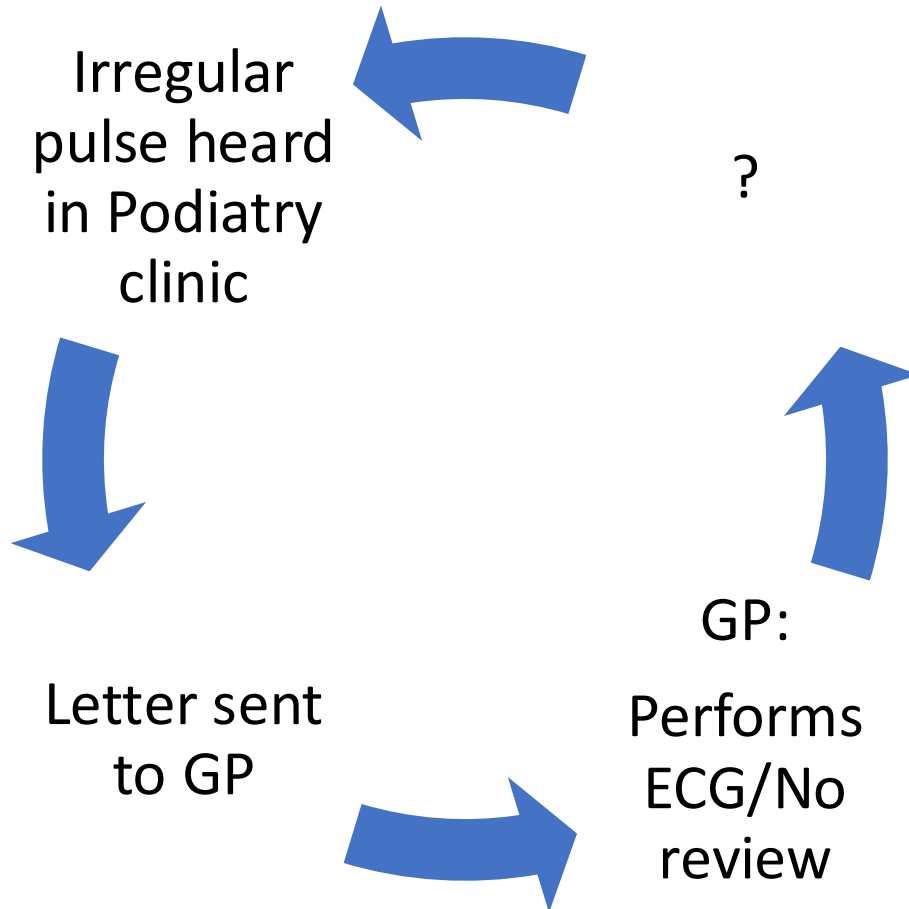


# Service development



GIG  
CYMRU  
NHS  
WALES

Bwrdd Iechyd Prifysgol  
Hywel Dda  
University Health Board



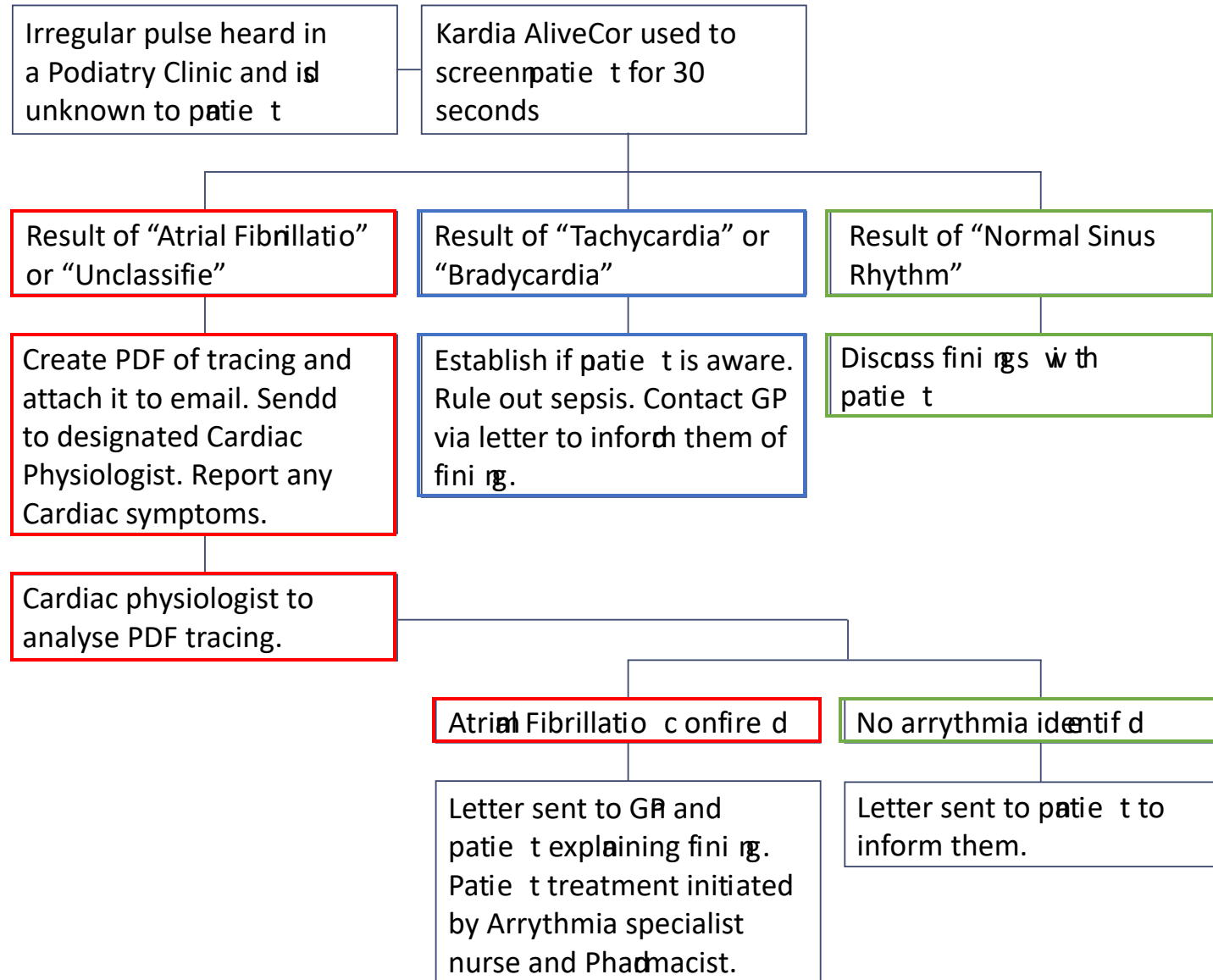
- How many confirmed Atrial Fibrillation's detected.
- How many referred on to Cardiology
- How many placed on a DOAC
- "Closing the loop"

# Original Pathway- Kardia AliveCor



GIG  
CYMRU  
NHS  
WALES

Bwrdd Iechyd Prifysgol  
Hywel Dda  
University Health Board



# Difficulties we've had/are having:



GIG  
CYMRU  
NHS  
WALES

Bwrdd Iechyd Prifysgol  
Hywel Dda  
University Health Board



Data Protection  
Impact  
Assessment  
(DPIA)



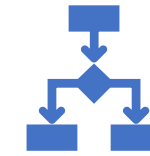
Cybersecurity



Device  
accessibility



Primary Care  
Enhanced  
Service



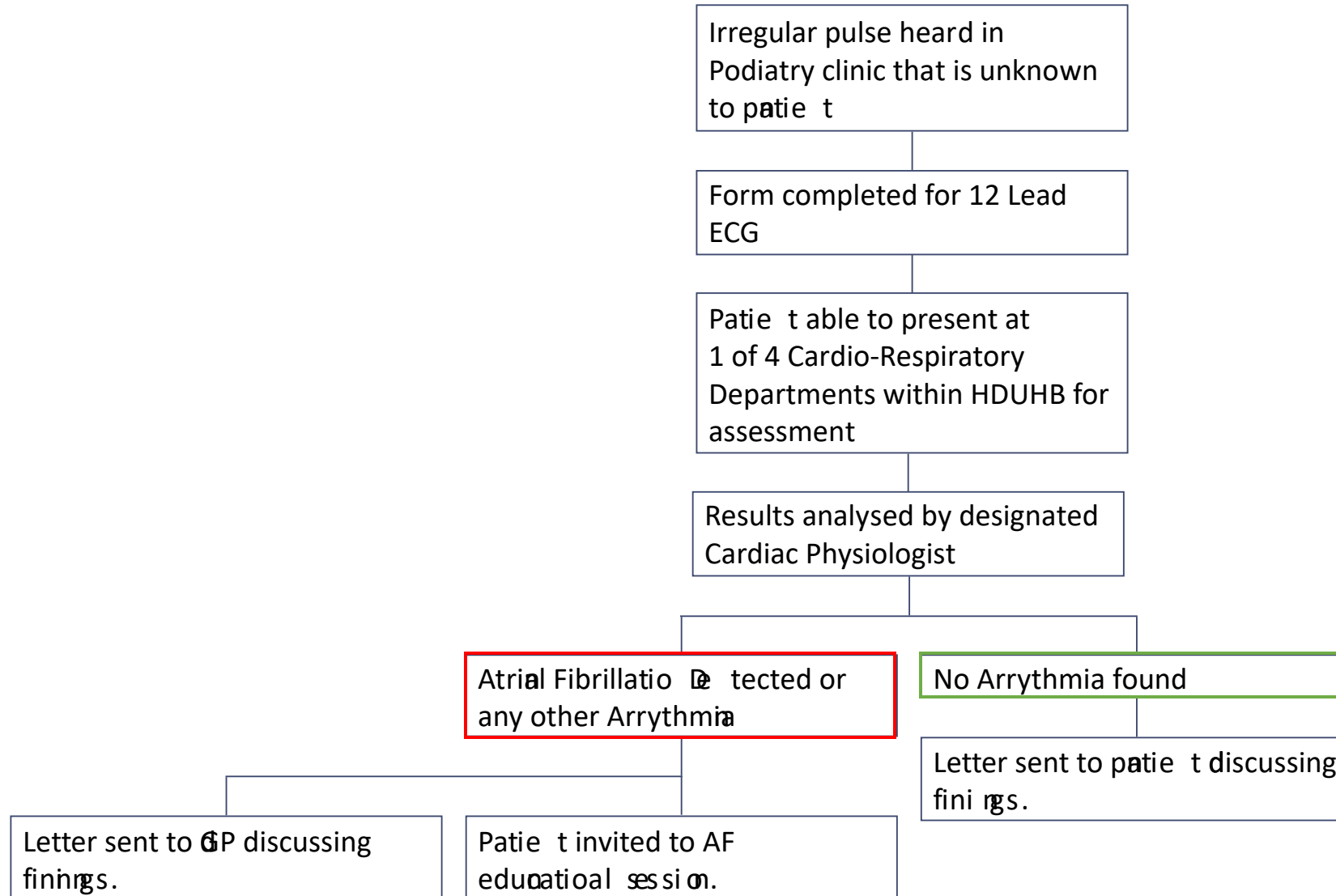
“Ask forgiveness,  
not permission.”

# Current Pathway – 12 Lead ECG



GIG  
CYMRU  
NHS  
WALES

Bwrdd Iechyd Prifysgol  
Hywel Dda  
University Health Board



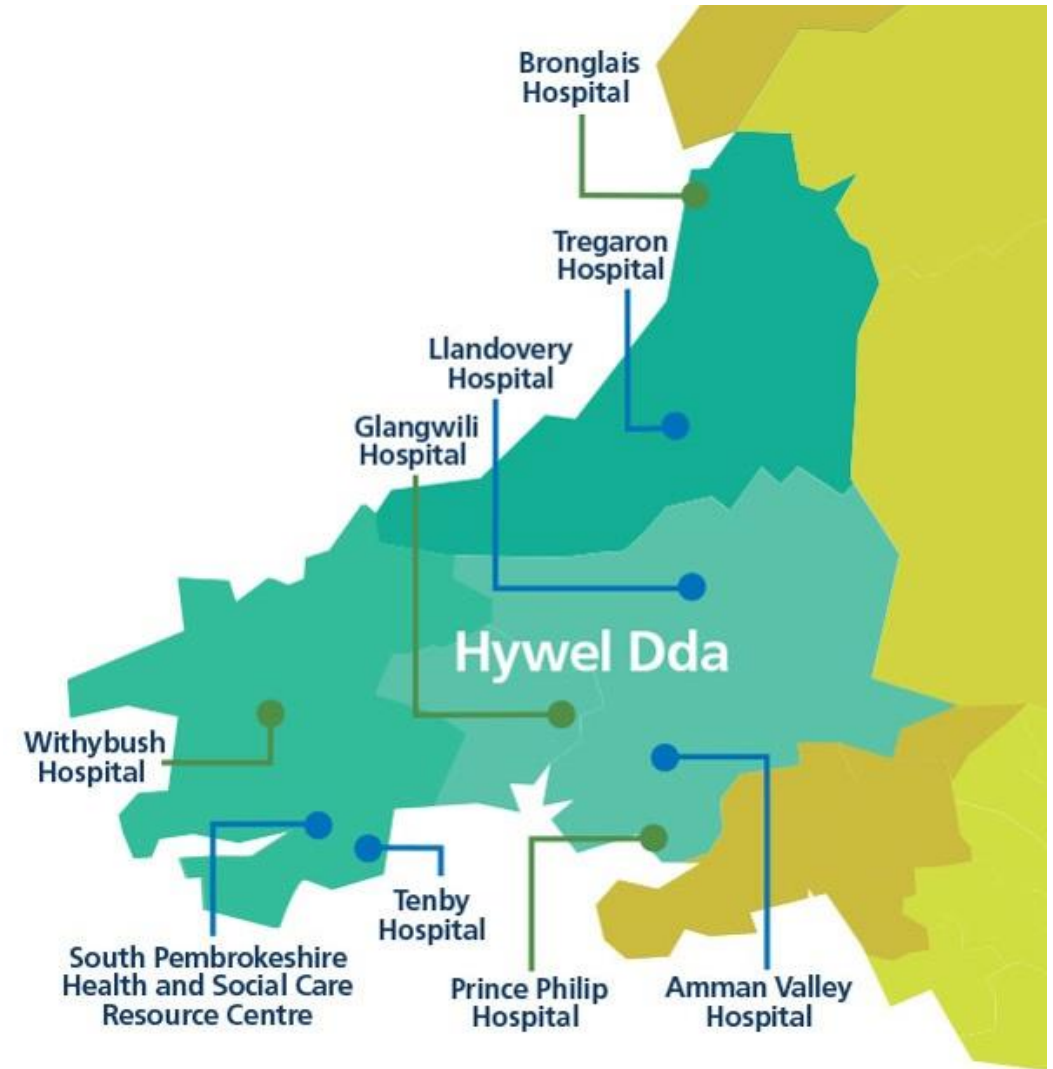
# Current challenges



GIG  
CYMRU  
NHS  
WALES

Bwrdd Iechyd Prifysgol  
Hywel Dda  
University Health Board

- Patients presenting at second Medical site
- Rurality
- Transport
- Repeat screening of existing patients





Screening began in Carmarthenshire on 7<sup>th</sup> October and was rolled out to Pembrokeshire and Ceredigion a fortnight later. So far (8 week in):

- Number of patients sent for ECG's:
- Number of ECG's performed:
- Number of patients identified with confirmed Atrial Fibrillations identified:
- Other issues detected:



Could approaching your arrhythmia service be an option in your NHS service? Is this something that's doable already? Especially if you're already using Kardia AliveCor's.

A big thank you to all those involved in this ongoing project especially Dr. Jane Lewis from Cardiff Metropolitan University, the Hywel Dda Podiatry team, Carly Tucker, Andrea Evans and Mathew Banner.



Health Needs Assessment. (2023). Swansea Bay University: A Regional Collaboration for Health.

National Institute for Health and Care Excellence (2024). *CKS is only available in the UK / NICE*. [online] NICE. Available at: <https://cks.nice.org.uk/topics/atrial-fibrillation/background-information/causes-risk-factors/>.

National Institute for Health and Care Excellence (2022). *Overview / KardiaMobile for Detecting Atrial Fibrillation / Guidance / NICE*. [online] Available at: <https://www.nice.org.uk/guidance/mtg64>.

Zemaitis MR, Boll JM, Dreyer MA. Peripheral Arterial Disease. 2023 May 23. In: StatPearls [Internet]. Treasure Island (FL): StatPearls Publishing; 2024 Jan–. PMID: 28613496.