

# Reduced amputations with system change and no significant extra money

High Risk Foot Clinical Lead

Andrew Sharpe

BSc (Hons), PGCert, MSc, FHEA, HCPC, MRPod



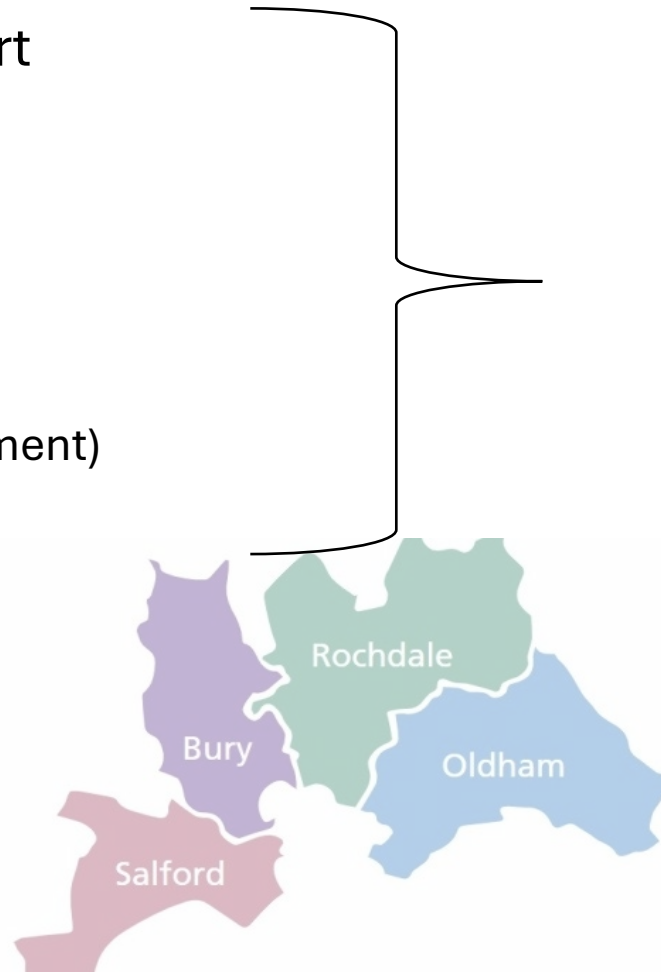
Northern Care Alliance  
NHS Foundation Trust



**CARE**  
**APPRECIATE**  
**INSPIRE**  
Be the difference.

# Overview

- Underpinned by Darzi Report
  - Analogue to Digital
  - Hospital to Community
  - Cure to Prevention
  - Stress to Steadfast
  - Silos to Whole Systems
  - Red to Black (Smart Procurement)
  - Black to Green (Net Zero)



## VISION

### Our Mission

**Saving Lives,  
Improving Lives**

We have a shared purpose and are committed to improving safety and effectiveness, giving an excellent experience, and promoting inclusion and equality.

# Challenge:

- With rising demand, health inequalities, and limited resources, how do we increase capacity within existing resource, reduce stress, be more fair, green and fiscally responsible while reducing demand and taking advantage of technology.

**NHS** PREVENTION  
community transformation  
care  
  
community access  
hospital  
**DIGITAL  
TECH**  
shifting care  
quality



Northern Care Alliance  
NHS Foundation Trust

**CARE**  
**APPRECIATE**  
**INSPIRE**  
Be the difference.

# Core Challenge & Vision



NHS requires reform



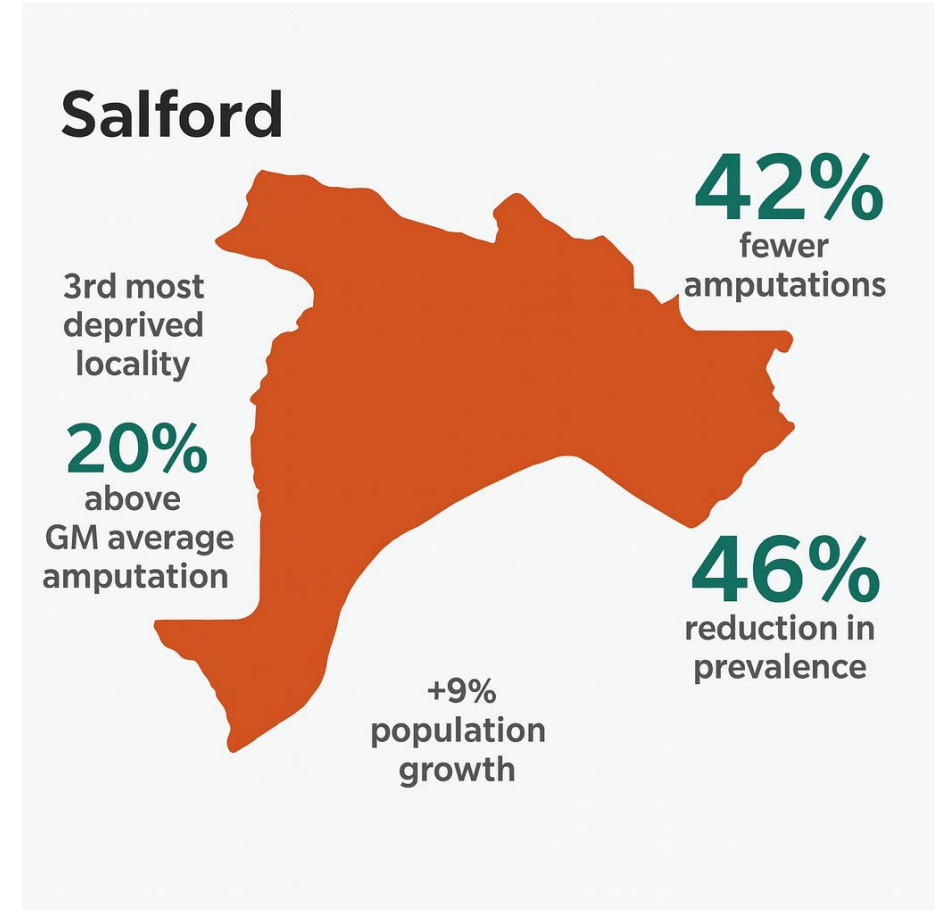
DFU mortality high



Governance-led solution

# Context and Outcomes

- High deprivation baseline
- 42% fewer amputations
- Population +9%, no funds



Northern Care Alliance  
NHS Foundation Trust

**CARE**  
**APPRECIATE**  
**INSPIRE**  
Be the difference.

# We do 4 things!

- Co-design 'Good'
- Do more appropriate 'stuff'
- Stop doing some 'stuff'
- Build Networks



Northern Care Alliance  
NHS Foundation Trust



**INSPIRE**  
Be the difference.

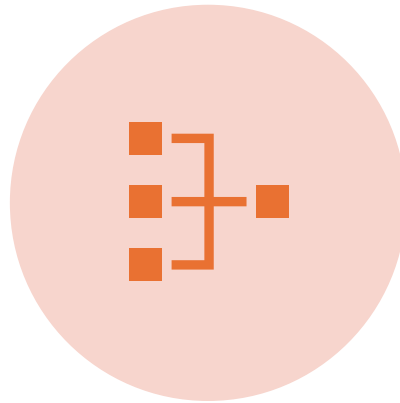
# Whole System Change



NON-MEDICAL  
LEADERSHIP



Northern Care Alliance  
NHS Foundation Trust



WHOLE-SYSTEM  
INTEGRATION



SHARED PATHWAY  
MAPPING

**CARE**  
**APPRECIATE**  
**INSPIRE**  
Be the difference.

# Staff Empowerment



Community triage first



Extended scope podiatrists



Vascular Referrals 61% to 93%

# Prevention & Diagnostics



3FOUR50 FRAMEWORK



MOVE MORE & CARDIAC  
REHAB PROGRAMME



SCREENING  
INTEGRATION



Northern Care Alliance  
NHS Foundation Trust

**CARE**  
**APPRECIATE**  
**INSPIRE**  
Be the difference.

# Equity in Access

- All high-risk limbs
- Leg ulcers levelled
- Cross-disciplinary skills



Northern Care Alliance  
NHS Foundation Trust

**CARE**  
**APPRECIATE**  
**INSPIRE**  
Be the difference.

# Efficiency and Technology



- Resource-neutral reform
- ROI £9.80 per £1
- Virtual triage + EPR



Northern Care Alliance  
NHS Foundation Trust

**CARE**  
**APPRECIATE**  
**INSPIRE**  
Be the difference.

# Implementation & Sustainability

- Stakeholder-led change
- Shared data dashboard
- Community of practice



Northern Care Alliance  
NHS Foundation Trust

**CARE**  
**APPRECIATE**  
**INSPIRE**  
Be the difference.

# Key Takeaways

- Governance-led reform
- Empowered clinicians
- Early diagnostics
- Equity of access



Northern Care Alliance  
NHS Foundation Trust

**CARE**  
**APPRECIATE**  
**INSPIRE**  
Be the difference.

# Next Steps – NCA and GM wide change

- Flexible Standardisation
- More with less
- LEAN strategies/ Finite Resource
- Eliminate inefficiency
- Staff Team/ Stakeholder engagement



Northern Care Alliance  
NHS Foundation Trust

CARE  
APPRECIATE  
INSPIRE  
Be the difference.



*That's all folks!*