



ROYAL COLLEGE *of* PODIATRY

Creating Knowledge – reporting outcomes

Dr Helen Branthwaite

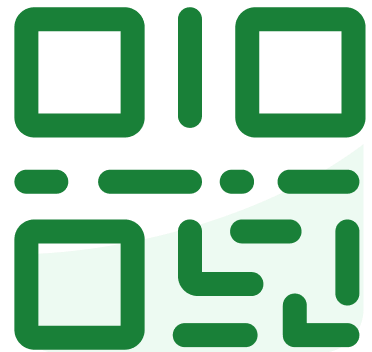


@helenbranthwaite1



@HelenBranthwaite

Email: Helen.Branthwaite@rcpod.org.uk



Join at slido.com
#2286866

slido



What problems do you most commonly see in your clinic?

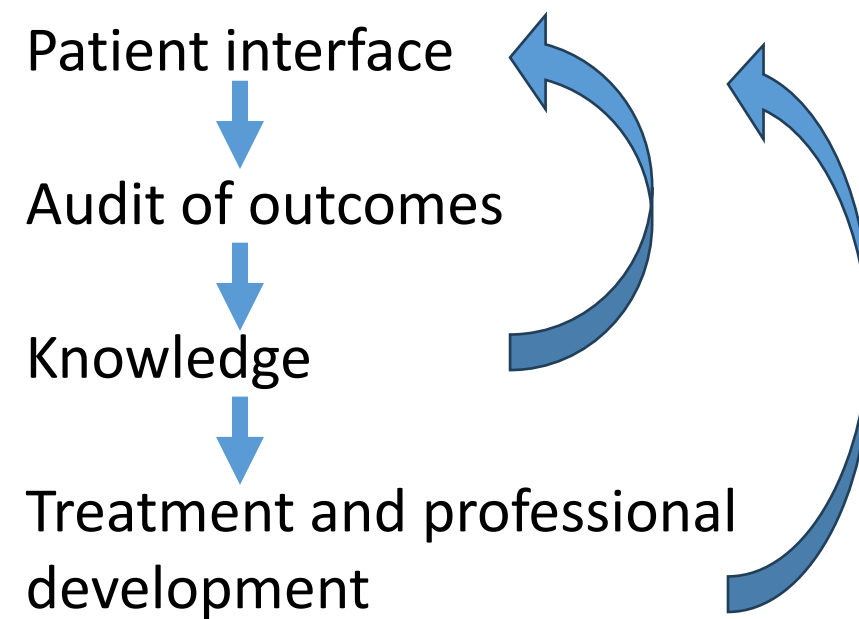
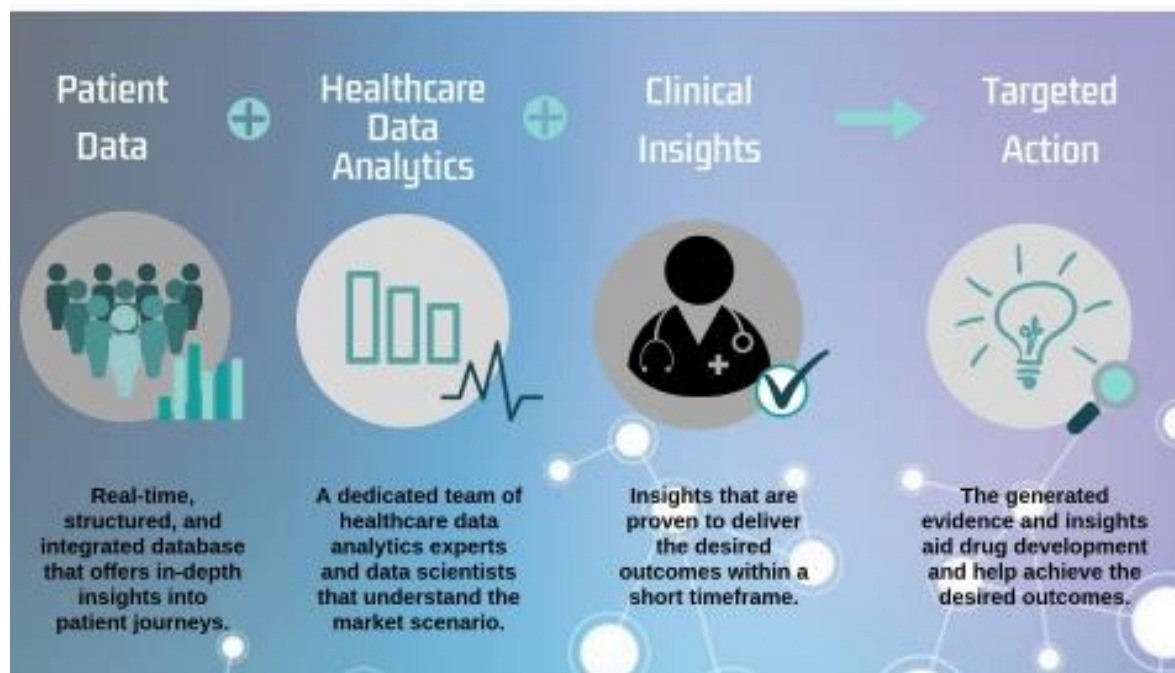
ⓘ Start presenting to display the poll results on this slide.

slido



How do you know which treatments are most effective?

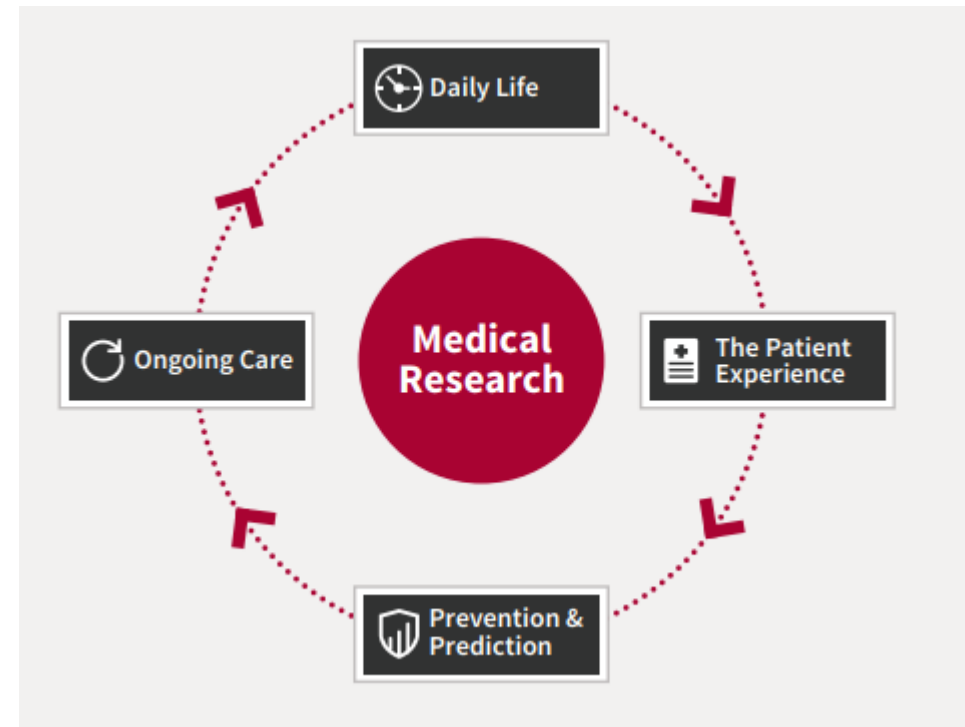
ⓘ Start presenting to display the poll results on this slide.



[Press release distribution, EDGAR filing, XBRL, regulatory filings | Business Wire](#)

Health Data

- Delivery
- Funding
- Innovation
- Development
- Knowledge
- Understanding
- Best Practice
- Reflect
- Inform
- Respond
- Grow
- Reputation
- Current
- Preventative
- Predictive
- Personalised
- Advance
- Interpret
- Collaborations
- Accessibility
- Experience
- Research
- Engagement
- Value-based care



[StanfordMedicineHealthTrendsWhitePaper2017.pdf](#)

PASCOM

[PASCOM 10 - The Podiatry Audit Tool \(pascom-10.com\)](http://pascom-10.com)



- Women 3 time more likely to seek input for foot pain
- People aged 50-69 biggest demographic
- 84% of non-surgical interventions are delivered in community settings.
- 50% of patients who had nail surgery had no underlying health complaints
- Acquired HAV most common surgical complaint
- Neuroma is the most painful presenting foot compliant
- All interventions improved MOXFQ by over 60%

Next steps

- Develop workforce
- Review PASCUM-10 tool
- Invigorate research culture
- Inform practice
- Enhance Podiatry Profile



ROYAL COLLEGE *of* PODIATRY

Questions?